

Supply issue: Citalopram tablets

(Say ‘sit-al-oh-pram’)

Citalopram is mainly used to treat depression. From October 2022, supply of the current brand, Citalopram PSM, will be disrupted. To make sure you can continue to take your medicine, Citalopram PSM has been replaced by a different brand.

What is the new brand of citalopram?

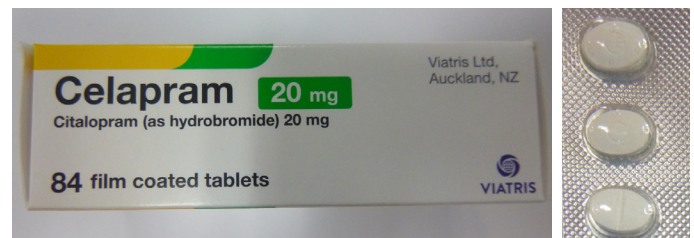
The new brand is called **Celapram**. (Say ‘sel-a-pram’)

Celapram tablets and packaging look different from Citalopram PSM’s. However, they have the same amount of active ingredient and work the same way.

Celapram is approved by Medsafe and has been available in New Zealand before.



Citalopram PSM



Celapram

It is important to keep taking citalopram

If you have any questions about the change to Celapram talk to your healthcare provider. Do not stop taking your medicine. Suddenly stopping citalopram can cause an increase in side effects such as dizziness, feeling anxious and sleep problems.



Note

If your dose is 10mg (half a tablet), Celapram has a break-line so you can break your tablet in half.



 For more information about citalopram visit pharmac.govt.nz/citalopram