

Methylphenidate extended release (12-hour) tablet formulation shortage update and advice (26/8/2024)

Brand names

- Concerta (18mg, 27mg, 36mg, 54mg)
- Methylphenidate Teva ER (18mg, 27mg, 36mg, 54mg)

A current supply outlook across both brands of methylphenidate extended release can be found on the medicine notice for methylphenidate extended release on our website www.pharmac.govt.nz/methylphenidate

Please see below for advice and recommendations for patients.

The below guidance can be used at your clinical discretion

Patients new to medication treatment:

Please do not start any new patients on a methylphenidate extended-release formulation unless absolutely necessary. Instead consider alternative shorter duration methylphenidate formulations, i.e. immediate release tablets, or one of the 8-hour formulations Ritalin LA or Rubifen SR (note below the release profiles of these two formulations are different).

Patients currently treated with a methylphenidate extended-release formulation:

Make an individual case by case decision. You may wish to consider the following:

- can the patient/parent/carer liaise with their usual pharmacy to establish whether they are expecting deliveries of their required strength of methylphenidate?
- is the patient's prescribed strength anticipated to have an upcoming shortage?
- is a treatment break an option?
- is an alternative formulation of methylphenidate an appropriate interim measure?
- is an alternative formulation appropriate to switch to over a longer period?
- does the patient have an appropriate Special Authority approval.

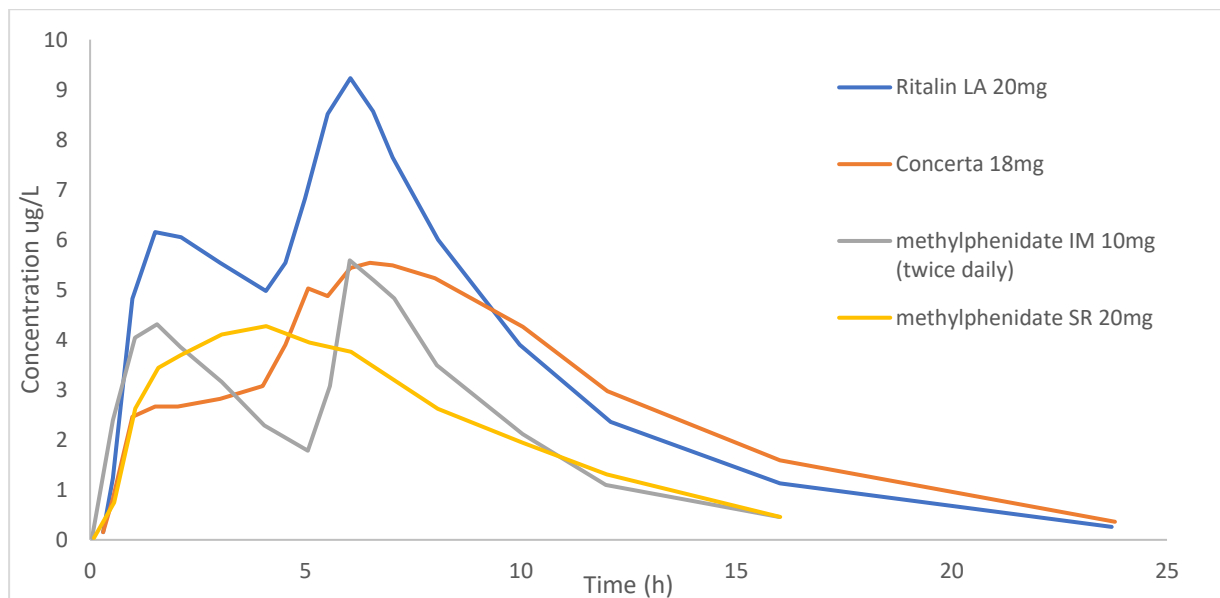
Dose equivalence of methylphenidate presentations available

The table below shows the daily dose of the 12-hour formulations of methylphenidate (extended release) and the equivalent total daily dose if switching to an 8-hour formulation of methylphenidate. However, remember that while the daily exposure to an equivalent dose will be the same, if switching from a 12-hour formulation to the same total dose as an 8-hour formulation, the exposure to that dose will occur over a shorter period of time, and the release profile will be different (see below for pharmacokinetics of different methylphenidate presentations).

Our clinical advisors have outlined that an 8-hour formulation combined with an immediate release formulation later in the day could be considered for people that require a 12-hour dose duration.

Formulation	Immediate release tablets	12-hour tablet	8-hour 50:50 release capsule	8-hour sustained release tablet
Brand names	Rubifen Ritalin	Concerta ER Methylphenidate Teva - ER	Ritalin LA	Rubifen SR
Equivalent total daily doses (in mg)	5	-	-	-
	10	-	10	-
	15	18	-	-
	20	-	20	20
	-	27	-	-
	30	36	30	-
	40	-	40	40
	45	54	-	-
	50	-	50	-
	60	72*	60	60
* unlicensed doses				

Pharmacokinetics of different methylphenidate formulations



Adapted from Markowitz et al, Clin Pharmacokinet. 2003;42(4):393-401; and Patrick KS et al, Biopharmaceutics & Drug Disposition. 1989; Mar-Apr;10(2):165-71.
 IM = immediate release
 SR= sustained release